

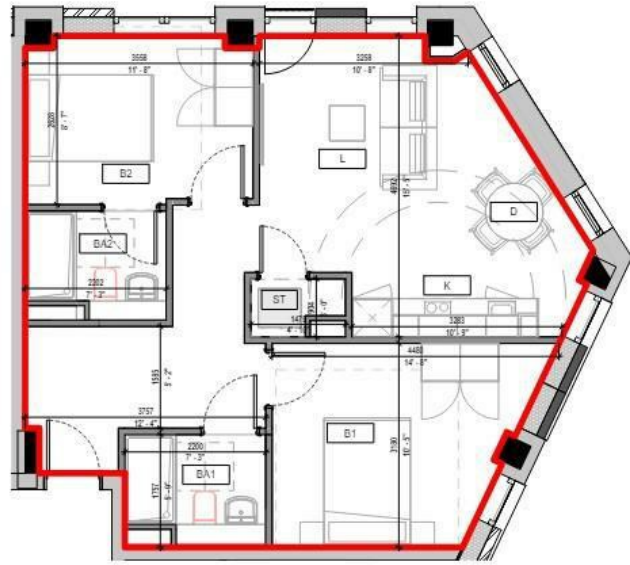
**FLAT 98 SPRINGWELL GARDENS, WHITEHALL ROAD**  
LEEDS, LS12 1FH

**£1,350 PER MONTH**

Experience modern city living in this 2 bed, 2 bath apartment at Springwell Gardens, Leeds City Centre now available with a lower deposit option.

**MONROE**

SELLERS OF THE FINEST HOMES



Springwell Gardens  
Apartment - A510



Note: Apartment Area and dimensions subject to Detailed Design and Construction tolerances



Energy Efficiency Rating		Current	Potential
Very energy efficient - lower running costs			
(92 plus) <b>A</b>			
(81-91) <b>B</b>		86	86
(69-80) <b>C</b>			
(55-68) <b>D</b>			
(39-54) <b>E</b>			
(21-38) <b>F</b>			
(1-20) <b>G</b>			
Not energy efficient - higher running costs			
<b>England &amp; Wales</b>		EU Directive 2002/91/EC	

Agents Note: Whilst every care has been taken to prepare these particulars, they are for guidance purposes only. All measurements are approximate and are for general guidance purposes only and whilst every care has been taken to ensure their accuracy, they should not be relied upon and potential buyers/tenants are advised to recheck the measurements

Monroe Lettings and Property  
Management  
Whitehall Road  
Leeds  
LS12 1FJ

0113 350 0866  
hello@monroelettings.com  
www.monroelettings.com

MONROE

SELLERS OF THE FINEST HOMES